

3

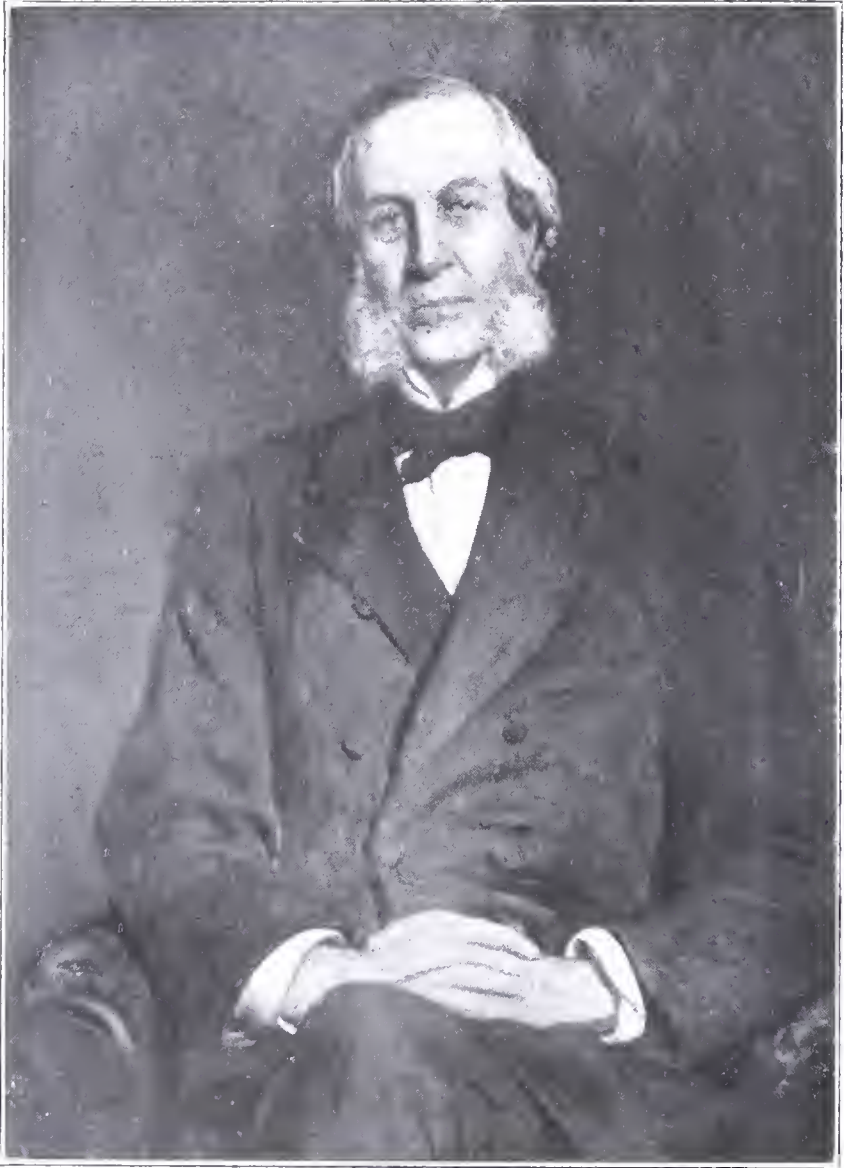
THE  
JOHN F. SLATER FUND  
PROCEEDINGS  
AND  
REPORTS

For Year Ending September 30, 1919





Digitized by the Internet Archive  
in 2014



JOHN F. SLATER

BORN MARCH 4, 1815—DIED MAY 7, 1884

3

THE  
JOHN F. SLATER FUND  
PROCEEDINGS  
AND  
REPORTS

For Year Ending September 30, 1919

“It is my wish that this trust be administered in no partisan, sectional, or sectarian spirit, but in the interest of a generous patriotism and an enlightened Christian faith.”

JOHN F. SLATER.

**TRUSTEES.**

(IN ORDER OF ELECTION)

JOHN A. STEWART  
WICKLIFFE ROSE  
RICHARD H. WILLIAMS  
WILLIAM LAWRENCE  
JAMES H. DILLARD  
CHARLES SCRIBNER  
FAIRFAX HARRISON  
JOHN M. GLENN  
FRANCIS P. VENABLE  
FRANCIS LYNDE STETSON  
JAMES H. KIRKLAND  
CHARLES S. BROWN

---

**STANDING COMMITTEES.**

**EXECUTIVE:**

FAIRFAX HARRISON, *Chairman*

WILLIAM LAWRENCE  
JOHN M. GLENN

FRANCIS LYNDE STETSON  
CHARLES S. BROWN

---

**FINANCE:**

RICHARD H. WILLIAMS, *Chairman*

JOHN A. STEWART

CHARLES SCRIBNER

---

**EDUCATION:**

JAMES H. DILLARD, *Chairman*

RICHARD H. WILLIAMS  
WICKLIFFE ROSE

FRANCIS P. VENABLE  
JAMES H. KIRKLAND

**OFFICERS.**

**PRESIDENT:**

JAMES H. DILLARD

**VICE-PRESIDENT:**

RICHARD H. WILLIAMS

**SECRETARY:**

GERTRUDE C. MANN,  
Box 418, Charlottesville, Va.

**TREASURER:**

THE METROPOLITAN TRUST COMPANY OF NEW YORK,  
60 Wall Street, New York City

**FIELD DIRECTORS:**

B. C. CALDWELL, Natchitoches, La.  
W. T. B. WILLIAMS, Tuskegee Institute, Ala.



**PROCEEDINGS**  
OF THE TRUSTEES OF THE  
**JOHN F. SLATER FUND**

---

**SIXTY-SECOND MEETING**

**December 6, 1918**

The winter meeting of the Trustees of the John F. Slater Fund was held at the residence of Mr. R. H. Williams, 2 W. 51st Street, New York, on December 6, 1918, at 11 A. M., with Mr. Williams in the chair. The following members were present:

Messrs. Williams, Stewart, Scribner, Glenn, Rose, Brown, and Dillard.

The minutes of the annual meeting held in the spring were read and approved.

The report of the Special Committee on Peabody Real Estate and Mortgages, consisting of Messrs. Williams and Brown, was received and ordered spread on the minutes. That portion of the report concerning the Park Avenue property was referred back to the committee with instructions to proceed toward settling the matter in as satisfactory way as may be possible.

The report of the Treasurer showed the following summary for the year ending September 30, 1918:

RECEIPTS

Balance on hand October 1, 1917.....	\$41,477.74	
Income from securities (Slater).....	80,545.00	
Carnegie donation for Training Schools .....	5,250.00	\$127,272.74
		<hr/>

DISBURSEMENTS

Appropriations, 1917-18 .....	\$74,557.00	
Expense and field account.....	12,803.14	
Accrued interest .....	15.00	
Balance to new fiscal year.....	39,897.60	\$127,272.74
		<hr/>

Reports of the Treasurer were also received in regard to the Peabody Fund, the Blanchard Fund, and the Donation of the Carnegie Corporation. The report of the Auditors, Messrs. Marwick, Mitchell, Peat & Co., showed that all accounts for the fiscal year ending September 30, 1918, had been audited, the securities examined, and all found correct.

The President made the following financial report on those appropriations for the year 1917-18, the balances from which may, by resolution, be used interchangeably:

#### APPROPRIATIONS

County Training Schools .....	\$ 25,750	
Summer Schools and Special Work.....	1,700	\$ 27,450
		<hr/>

#### DISBURSEMENTS

County Training Schools (54).....	\$ 26,890	
Special Work:		
Jefferson School, Charlottesville, Va.....	\$ 150	\$ 27,040
		<hr/>
Balance September 30, 1918.....		\$ 410

The President stated that the \$3,000 available from the Blanchard Fund for School and Home Visitors had been appropriated for the year 1918 as follows:

#### Contribution to School and Home Visitor

Philadelphia, Pa. ....\$360

#### Salary School and Home Visitor

Birmingham, Ala. ....	720	
New Orleans, La.....	720	
Raleigh, N. C.....	600	
Richmond, Va. ....	600	\$ 3,000
		<hr/>

On motion the following resolution was adopted :

That \$5,000, or any part thereof, if available for use from the income of the Peabody Donation by or before March 20, 1919, be added to the appropriation already made for the establishment and support of County Training Schools.

The President made a brief verbal report, dealing especially with the increasing demand for the establishment of County Training Schools, after which the meeting adjourned.

### SIXTY-THIRD MEETING

May 7, 1919

The annual meeting of the Trustees of the John F. Slater Fund was held on May 7, 1919, in the Directors' Room of the United States Trust Company, New York, with the following members present :

Messrs. R. H. Williams, John A. Stewart, Wickliffe Rose, Francis P. Venable, Charles S. Brown, J. H. Kirkland and James H. Dillard.

Letters of regret were read from Messrs. Glenn and Stetson and from Bishop Lawrence.

The minutes of the winter meeting were read and approved.

In his report the President presented letters which he had addressed to the General Education Board and to the Carnegie Corporation, the former in behalf of an appropriation for extension of work in City Schools, the latter in behalf of additional support for increasing the number of County Training Schools. He stated that the General Education Board had granted the request for \$4,500 to meet an equal amount for the same purpose from the Slater Board, and that the Carnegie Corporation had not yet taken action on the request of an appropriation in addition to the two gifts already made. The report stated that seventy-two County Training Schools were in operation and that by constant supervision every effort was being made to have these schools do thorough work. It

was proposed that actual examinations should be given to test the thoroughness of the work. The President also reported on visits to a number of Private Schools and Colleges, in two of which he had given examinations, with not very satisfactory results. In many institutions the curriculum is too ambitious and the work too hurried.

The Education Committee made the following recommendations of appropriations for 1919-20:

1. <i>County Training Schools</i> (\$500), Including \$10,000 from donations of the Carnegie Corporation and \$12,000 from the Peabody Donation .....		\$ 44,000
2. <i>Summer Schools and Special Work</i> .....		1,500
3. <i>City Schools</i> , Including \$4,500 from the General Education Board..		9,000
4. <i>State Normal Schools</i> , Florida A. and M. College.....\$ 450 Virginia N. and I. Institute..... 450		900
5. Tuskegee N. and I. Institute.....\$ 6,000 Hampton N. and A. Institute..... 6,000		12,000
6. <i>Private Secondary Schools</i> , Calhoun Colored School, Calhoun, Ala.....\$ 900 Americus Institute, Americus, Ga.; Fort Valley Industrial School, Fort Valley, Ga.; St. Augustine's School, Raleigh, N. C.; Bettis Academy, Trenton, S. C.; Penn School, Frogmore, St. Helena Island, S. C.; Christiansburg Industrial Institute, Cambria, Va.; Manassas Industrial School, Manassas, Va.; St. Paul Industrial School, Lawrenceville, Va. (8), \$600..... 4,800 Stillman Institute, Tuscaloosa, Ala.; Utica Industrial Institute, Utica, Miss.; Piney Woods Country Life School, Braxton, Miss.; *Henderson Normal Institute, Henderson, N. C.; Waters Normal Institute, Winton, N. C.; Farmers' Improvement Society Agricultural School, Wolfe City, Texas (6), \$450 .....		2,700

\*Transferred to High Point, N. C.

Daytona Industrial School, Daytona, Fla.; Mary Potter Memorial School, Oxford, N. C.; Palmer Memorial Institute, Sedalia, N. C.; Brewer Normal School, Greenwood, S. C.; Laing School, Mt. Pleasant, S. C. (5), \$300.....	1,500	9,900
--	-------	-------

7. *Colleges and Universities,*

Miles Memorial College, Birmingham, Ala.....	\$ 450	
Selma University, Selma, Ala.....	600	
Talladega College, Talladega, Ala.....	750	
Atlanta University, Atlanta, Ga.....	1,500	
Morehouse College, Atlanta, Ga.....	1,200	
Paine College, Augusta, Ga.....	450	
Spelman Seminary, Atlanta, Ga.....	1,500	
State University, Louisville, Ky.....	450	
Coleman College, Gibsland, La.....	600	
Straight College, New Orleans, La.....	750	
Tougaloo College, Tougaloo, Miss.....	750	
Livingstone College, Salisbury, N. C.....	600	
Shaw University, Raleigh, N. C.....	1,500	
Allen University, Columbia, S. C.....	600	
Claffin University, Orangeburg, S. C.....	1,200	
Morris College, Sumter, S. C.....	450	
Lane College, Jackson, Tenn.....	600	
Knoxville College, Knoxville, Tenn.....	450	
Fisk University, Nashville, Tenn.....	2,000	
Bishop College, Marshall, Texas.....	750	
Texas College, Tyler, Texas.....	450	
Wiley University, Marshall, Texas.....	600	18,200
	<hr/>	<hr/>
		\$ 95,500

The report was adopted.

The President was again authorized to use interchangeably any balances that might occur in the first two items of the above appropriations.

Mr. R. H. Williams, Chairman of the Finance Committee, presented reports from the committee, and from the Treasurer, showing the condition of the funds to date. The reports were received and approved.

This being the annual meeting the following officers were duly elected: President, James H. Dillard; Vice-President, Richard H. Williams; Secretary, Miss G. C. Mann; Treasurer, the Metropolitan Trust Company of New York.

The following Standing Committees were appointed:

*Executive Committee:* Fairfax Harrison, Chairman; William Lawrence, John M. Glenn, Francis Lynde Stetson, Charles S. Brown.

*Finance Committee:* Richard H. Williams, Chairman; John A. Stewart, Charles Scribner.

*Education Committee:* James H. Dillard, Chairman; Richard H. Williams, Francis P. Venable, Wickliff Rose, James H. Kirkland.

The meeting then adjourned.

# REPORTS

## COUNTY TRAINING SCHOOLS

The reports from the seventy County Training Schools which were included in the list during the whole of the session 1918-19 show the following facts:

Number of teachers.....	402
Number of pupils .....	17,279
Pupils in High School Grades.....	1,130
Average length of term.....	8 months
Received from public tax funds.....	\$ 131,158
From Slater Fund .....	39,037
Total for salaries .....	\$ 160,165
Received from General Education Board.....	\$ 13,918
Number schools having teachers' homes.....	16
Number schools having a dormitory.....	14
Number schools having boarders in nearby homes....	46

For various reasons two (marked with asterisk) of the seventy-two schools included in the list below were not retained in the list for the complete session. There has been great difficulty in getting properly qualified teachers.

The beginning of these schools was in 1911-12, when the Slater Fund, in correspondence with four County Superintendents, offered to contribute \$500 in each of the counties, with the understanding that the schools should be public schools supported by public funds. The offer of the Slater Fund was to give \$500 for salaries of teachers on the following conditions, which have been maintained from the first:

1. The school property shall belong to the state, county, or district, and the school shall be a part of the public school system.

2. There shall be an appropriation for salaries of not less than \$750 from public funds raised by state, county, or district taxation.



3. The teaching shall extend through the eighth year, with the intention of adding at least two years as soon as it shall be possible to make such extension.

In 1913-14 the General Education Board adopted the policy of assisting with appropriations for buying needed equipment, and also in aid of erecting workshops and teachers' homes.

Two pamphlets have been published by the Slater Board in regard to the work of the Training Schools (Occasional Papers, 14 and 18).† In the latter of these the aims and purposes of these schools was summarized about as follows:

1. To supply for the county a central school offering work in advance of that offered in the common rural schools.

2. To lay emphasis on thorough work in all common school studies.

3. To give industrial training, laying particular emphasis upon subjects pertaining to home and farm.

4. To prepare boys and girls to make a good living and lead a useful life by knowing how to care for the home, to utilize land, to make home gardens, to raise their own meat, poultry products, milk products, etc.

5. To prepare young men and young women to become rural and elementary school teachers by enabling them to meet the legal requirements of the state, by giving them a close acquaintance and sympathy with rural activities, and by supplying such elementary professional training as will help them to secure the best results in this work.

The need in the South for properly qualified Negro rural teachers is everywhere apparent, and it was with this thought that these schools originated. County superintendents felt the pressing need for at least somewhat better prepared teachers and saw that under existing circumstances they must get them by training them at home. It was also desired that a

---

†The edition of No. 14 has been exhausted. Copies of No. 18, which contains suggested courses of study, may be had on application.



better opportunity should be offered near home for the better class of pupils to continue their training beyond the limits of the one-room school.

The following is a list of the schools for the session 1918-1919, with names of county, post-office, county superintendent, and principal:

**Alabama:**

Baldwin, Daphne.

Supt., S. M. Tharp; Principal, Ligon A. Wilson.

Bibb, Centerville.

Supt., H. H. Jones; Principal, H. D. Davidson.

Coffee, Enterprise.

Supt., G. C. Bowden; Principal, E. H. Tindel.

Conecuh, Evergreen.

Supt., W. R. Bennett; Principal, E. H. Whiting.

Coosa, Cottage Grove.

Supt., H. H. King; Principal, M. W. Rivers.

Henry, Abbeville.

Supt., P. A. McDaniel, Jr.; Principal, J. H. Jackson.

Lowndes, Hayneville.

Supt., J. A. Coleman; Principal, S. T. Wilson.

Mobile, Plateau.

Supt., S. S. Murphy; Principal, I. J. Whitley.

Pickens, Carrollton.

Supt., W. H. Storey; Principal, R. H. Lee.

Russell, Seale.

Supt., H. E. Hutcheson; Principal, Marion Martin.

Tuscalloosa, Tuscaloosa.

Supt., D. L. Smith; Principal, Archie Mosley.

**Arkansas:**

\*Crittenden, Edmondson.

Supt., T. P. Johnson; Principal, W. Conkling Howard.

Dallas, Fordyce.

Supt., G. R. Turrentine; Principal, S. J. Anderson.

Hempstead, Hope.

Supt., Jno. H. Arnold; Principal, H. C. Yerger.

Lee, Marianna.

Supt., J. A. Hudson ; Principal, D. W. Hughes.

Ouachita, Camden.

Supt., T. C. Abbott ; Principal, A. B. Crump.

**Florida :**

Palm Beach, Delray.

Supt., W. E. Keen ; Principal, Clarence C. Walker.

**Georgia :**

Ben Hill, Fitzgerald.

Supt., J. H. Bullard ; Principal, N. E. McLean.

Bulloch, Statesboro.

Supt., B. R. Olliff ; Principal, Wm. James.

Monroe, Forsyth.

Supt., R. L. Williams, Jr. ; Principal, W. M. Hubbard.

Tift, Tifton.

Supt., A. J. Ammons ; Principal, G. W. Burton.

Washington, Sandersville.

Supt., D. W. Harrison ; Principal, T. J. Elder.

**Kentucky :**

Bourbon, R. R., Paris.

Supt., J. B. Caywood ; Principal, C. T. Cook.

Fayette, Lexington.

Supt., Nannie G. Faulconer ; Principal, L. W. Taylor.

**Louisiana :**

Lincoln, Grambling.

Supt., H. L. Campbell ; Principal, Chas P. Adams.

Morehouse, Bastrop.

Supt., S. A. Caldwell ; Principal, R. G. Steptoe.

Sabine, Converse.

Supt., W. S. Mitchell ; Principal, R. D. Doggett.

Washington, Franklinton.

Supt., D. A. Stringfield ; Principal, B. P. Smith.

**Maryland :**

Dorchester, Cambridge.

Supt., Jas. B. Noble ; Principal, Edna M. Moore.

**Mississippi:**

Covington, Mt. Olive.

Supt., Alex Newton; Principal, W. W. Blackburn.

Lamar, Purvis.

Supt., A. Q. Broadus; Principal, J. J. Jefferson.

Lee, Tupelo.

Supt., T. M. Milam; Principal, A. M. Strange.

\*Jones, Ellisville.

Supt., C. W. Jenkins; Principal, \_\_\_\_\_.

**North Carolina:**

Pitt, Grimesland.

Supt., S. B. Underwood; Principal, G. R. Whitfield.

Anson, Wadesboro.

Supt., W. C. Bivens; Principal, J. R. Faison.

Bertie, Powellsville.

Supt., H. W. Early; Principal, Chas. G. White.

Cleveland, Shelby.

Supt., I. C. Griffin; Principal, A. L. Foster.

Columbus, Whiteville.

Supt., F. T. Wooten; Principal, C. Dillard, Jr.

Halifax, Print.

Supt., A. E. Akers; Principal, V. N. Bond.

Hyde, Scranton.

Supt., G. M. Guthrie; Principal, T. R. Berry.

Johnston, Smithfield.

Supt., L. T. Royall; Principal, Wm. M. Cooper.

Martin, Parmele.

Supt., A. J. Manning; Principal, W. C. Chance.

Northampton, Garysburg.

Supt., P. J. Long; Principal, H. C. Jones.

Orange, Chapel Hill.

Supt., R. H. Claytor; Principal, R. E. Malone.

Pamlico, Stonewall.

Supt., T. B. Attmore; Principal, T. T. Ringer.

Sampson, Clinton.

Supt., R. W. Isley; Principal, L. N. Neal.

Wake, Method.

Supt., Jno. C. Lockhart; Principal, A. B. Johnson.

**South Carolina :**

Barnwell, Barnwell.

Supt., H. J. Crouch ; Principal, Geo. G. Butler.

Clarendon, Manning.

Supt., E. J. Browne ; Principal, Wm. L. Bryant.

Dorchester, Summerville.

Supt., J. A. Parler ; Principal, Carrie H. Lindsey.

Georgetown, Georgetown.

Supt., J. W. Doar ; Principal, J. B. Beck.

Horry, Conway.

Supt., M. J. Bullock ; Principal, S. B. Williams.

Marion, Marion.

Supt., S. J. Wall ; Principal, Jno. P. Burgess.

**Tennessee :**

Fayette, Somerville.

Supt., W. T. Loggins ; Principal, W. P. Ware.

Haywood, Brownville.

Supt., F. R. Ogilvie ; Principal, F. E. Jeffries.

Lauderdale, Ripley.

Supt., G. G. McLeod ; Principal, S. H. Johnson.

Madison, Denmark.

Supt., W. A. Malone ; Principal, A. S. Brown.

Shelby, Lucy.

Supt., Charl Williams ; Principal, T. J. Johnson.

Wilson, Lebanon.

Dis't Supt., W. Lee Harris ; Principal, L. L. Campbell.

**Texas :**

Camp, Pittsburg.

Supt., W. N. Tucker ; Principal, Christine Cash.

Guadalupe, Seguin.

Supt., Joe. F. Saegert ; Principal, N. Dudley.

Lavaca, Hallettsville.

Supt., Frank Schoppe ; Principal, P. S. Stevens.

Travis, Manor.

Supt., Leon G. Halden ; Principal, J. E. Clayton.

Walker, Huntsville.

Supt., J. C. Thomas ; Principal, S. W. Houston.

**Virginia:**

Albemarle, Charlottesville.

Supt., H. M. McManaway; Principal, J. G. Shelton.

Caroline, Bowling Green.

Supt., John Washington; Principal, A. M. Walker.

Charles City, Ruthville.

Supt., A. C. Cooper; Principal, E. Wells Jones.

Greenville, N. Emporia.

Supt., Henry Maclin; Principal, J. H. Waller.

Middlesex, Syringa.

Supt., Geo. D. Anderton; Principal, A. W. Adkins.

Nottoway, Blackstone.

Supt., W. R. Wrigglesworth; Princ'l, Jno. Minor Botts.

Sussex, Waverly.

Supt., A. B. Bristow; Principal, Hester Young.

York, Halsteads Point.

Supt., A. J. Renforth; Principal, C. E. Brown.

**TOWN AND CITY SCHOOLS**

Appropriations amounting to \$7,465 (of which the amount of \$3,000 was contributed by the General Education Board) were made to local Boards of Education for the promotion of industrial work. - These appropriations are made with the understanding that at least an equal amount shall be devoted to this purpose from the public school funds.

\$475—Western High School.

Paris, Ky. Supt., Ralph Yakel.

\$450—Effinger Street School.

Harrisonburg, Va. Supt., W. H. Keister.

\$300—Adel Industrial High School.

Adel, Ga. Supt., G. E. Usher.

Lincoln Industrial School.

Paducah, Ky. Supt., Ralph Yakel.

Hattiesburg Public School.

Hattiesburg, Miss. Supt., F. B. Woodley.

Valena School.

Bay St. Louis, Miss. Supt., C. E. Talbert.

Bradley Academy.

Murfreesboro, Tenn. Supt., J. C. Mitchell.

John F. Slater High School.

Bristol, Tenn. Supt., R. R. Rubins.

Calfee School.

Pulaski, Va. Supt., E. L. Darst.

\$250—Franklin Colored School.

Franklin, Tenn. Supt., A. J. Haun.

Crowley Colored Public School.

Crowley, La. Supt., J. W. Oxford.

\$225—Washington Graded and High School.

Miami, Fla. Supt., R. E. Hall.

Russell School.

Lexington, Ky. Supt., M. A. Cassidy.

Anderson City Schools.

Anderson City, S. C. Supt., E. C. McCants.

Graded and Industrial School.

Cheraw, S. C. Supt., S. A. Merchant.

Shelbyville Colored School.

Shelbyville, Tenn. Sec., C. L. Shoffner.

Westmoreland Colored School.

Danville, Va. Supt., F. H. Wheatley.

Farmville Colored School.

Farmville, Va. Supt., T. J. McIlwaine.

\$200—Baton Rouge Colored School.

Baton Rouge, La. Supt., W. B. Hatcher.

Bogalusa Negro School.

Bogalusa, La. Supt., F. C. Ratliff.

Canton Public School.

Canton, Miss. Supt., W. H. Braden.

South Jackson High School.

Jackson, Tenn. Supt., C. B. Ijams.

Laurel City School.

Laurel, Miss. Supt., R. H. Watkins.

Patterson Colored School.

Patterson, La. Supt., Charles Gott.

\$150—Tower Hill Graded School.

Kinston, N. C. Supt., K. R. Curtis.

West St. Graded School.

Newbern, N. C. Supt., H. P. Smith.

Colored High School.

Reidsville, N. C. Supt., J. H. Allen.

Rockingham City School.

Rockingham, N. C. Supt., L. J. Bell.

Roanoke Rapids Graded School.

Roanoke Rapids, N. C. Supt., A. M. Proctor.

Princeville Graded School.

Tarboro, N. C. Supt., R. H. Bachman.

Washington Public School.

Washington, N. C. Supt., Frank L. Ashley.

\$115—Jefferson School.

Charlottesville, Va. Supt., J. G. Johnson.

#### STATE NORMAL SCHOOLS

The Slater Fund made small donations to two State Normal Schools during the session 1918-19: Tallahassee, \$450 (in aid of nurse training); Petersburg, \$450 (in aid of matron and nurse work).

#### Florida Agricultural and Mechanical College for Negroes.

Tallahassee, Fla.

President, Nathan B. Young.

Value of property, \$137,500. Number of teachers: men, 21; women, 20. Attendance: male, 123; female, 186; total, 309, of whom 238 (male, 98; female, 140) boarded in the institution. Amount paid in salaries, \$24,757. The President reported receipt of \$25,000 from the Federal Government and \$11,000 from the State.

#### Virginia Normal and Industrial Institute.

Petersburg, Va.

President, John M. Gandy.



Value of property, \$284,163. Number of teachers: men 10; women, 30. Attendance: male, 233; female, 759; total, 992, of whom 768 (male, 148; female, 620) boarded in the school. Amount paid in salaries, \$29,703. The President's report shows receipts of \$55,000 from the State.

### HAMPTON AND TUSKEGEE

For the session of 1918-19 the Slater Board made an appropriation of \$6,000 to each of these institutions. It is understood that these amounts are to aid in the excellent work of teacher-training done in these schools.

#### Hampton Normal and Agricultural Institute.

Hampton, Va.

Principal, James E. Gregg.

Amount of productive endowment.....	\$2,614,663
Acres owned, 1,001; value.....	125,000
Value of buildings .....	1,050,000
Value of equipment .....	200,000
	<hr/>
Total .....	\$3,989,663

Debt, none reported.

Total income (including \$100,960 for endowment and \$143,077 for buildings and permanent improvements) .....	\$542,708
Amount paid for administration and salaries of teachers .....	\$160,122

Number of teachers: men, 58; women, 59. Attendance in regular courses: male, 327; female, 323; total, 650, all of whom boarded in the institution. There were 444 in the Whittier Training School, 410 in the Summer School, and 932 students sent by the War Department.

#### Tuskegee Normal and Industrial Institute.

Tuskegee, Ala.

Principal, Robert R. Moton.



Amount of productive endowment.....	\$2,214,704
Acres owned, 2,345; value.....	157,906
Value of buildings .....	1,054,061
Value of equipment .....	245,248
	<hr/>
Total .....	\$3,671,919

Debt, \$26,622.

Total income (including \$22,663 for endowment) .....	\$409,220
Amount paid for administration and salaries of teachers .....	\$152,766

Number of teachers: men, 106; women, 92. Attendance in regular courses: male, 949; female, 787; total, 1,736, of whom 1,588 (male, 912; female, 676) boarded in the institution.

#### PRIVATE SECONDARY SCHOOLS

Appropriations were made to twenty schools of this class.

Number receiving aid from some religious body.....	12
Number having some endowment.....	9
Number receiving contribution from public school funds	8
Total number of pupils.....	5,542
Number in high school grade.....	1,269

#### ALABAMA:

**Calhoun Colored School, Calhoun.**

Principal, Miss Charlotte R. Thorn.

Independent. Value of property, \$112,258. Number of teachers: men, 10; women, 27. Attendance: male, 155, female, 204; total, 359, of whom 90 (male, 43; female, 47) boarded in the school. Number above elementary grades, 43. Amount paid for administration and salaries of teachers, \$21,667. The school received from endowment funds, \$5,350; from the Slater Fund, \$900; from the General Education

Board, \$10,000; Boston Calhoun Club, \$1,900; New Haven Calhoun Club, \$660; Phelps-Stokes Fund, \$5,000; Frothingham Fund, \$123.50, and from private subscriptions, \$32,657.

Extract from report of Principal:

"Of special importance has been the securing of over 2,000 acres of land in furtherance of our land scheme. This land is bought through the loans of friends, to whom is repaid not only the principal but 6 per cent interest. The Calhoun Land Trust is under the trusteeship of Joseph P. Loud, of Boston.

"The generous appropriation of \$10,000 was made by the General Education Board, and a gift from the Phelps-Stokes Fund of \$5,000 to secure from 200 to 250 acres of land to add to the school farm. We have been obliged to rent land for some years with an annual average rental of over \$900.

"This year was introduced the tenth grade of academic work, or second-year high. This additional year makes it possible for our students to secure second grade certificates; it also saves one year's work in higher schools. This addition has forced us into a little work in Latin, and the introduction of algebra and inventional geometry in the last three grades.

"The lowering of the entrance age for our pupils testifies to the ever-increasing interest of the people in education. Children now enter the Primary Department at 4 and 5 years of age, where formerly the younger pupils would be from 7 to 9."

**Stillman Institute, Tuscaloosa.**

President, R. K. Timmons.

Southern Presbyterian. Value of property, \$75,000. Number of teachers: men, 4. Attendance, all male, 39, of whom 31 boarded in the school. Number above elementary grades, 39. Amount paid for salaries, \$5,220. The school received from the Slater Fund, \$450; from the Presbyterian Committee on Home Missions, \$21,176; from private subscriptions, \$1,393.

Extract from report of Principal:

- "1. The standard has been raised one year.
- "2. New furniture has been put in all dormitories.
- "3. Sixty acres have been added to the farm.
- "4. A new residence for another teacher is under construction.

"We are doing everything in our power to send out some well-prepared public school teachers."

**FLORIDA:****Daytona Normal and Industrial Institute, Daytona.**

Principal, Mrs. Mary McLeod Bethune.

Value of property, \$97,000. Number of teachers; women, 14. Attendance: 225, of whom 101 boarded in the dormitories. Number above elementary grades, 44. Amount paid for salaries of teachers, \$8,840. The school received from the Slater Fund, \$300; from other sources, \$34,709.

**GEORGIA:****Americus Institute, Americus:**

Principal, M. W. Reddick.

Baptist. Value of property, \$38,420. Number of teachers: men, 5; women, 9. Attendance: male, 43; female 140; total, 183, of whom 115 (male, 25; female, 90) boarded in the school. Number above elementary grades, 64. Amount paid for administration and salaries, \$4,346. The school received from the Slater Fund, \$600; from the American Baptist Home Mission Society and Women's Society, and Southwest Georgia Association, \$3,151; from private subscriptions, \$176.

**Fort Valley High and Industrial School, Fort Valley.**

Principal, H. A. Hunt.

Episcopal. Value of property, \$53,283. Number of teachers: men, 10; women, 15. Attendance: male, 192; female, 435; total, 627, of whom 137 (male, 51; female, 86) boarded in the school. Number above elementary grades, 137. Amount paid for administration and salaries, \$8,149. The school received from public funds, \$1,000; from the Slater Fund, \$600; from the General Education Board, \$4,100; from the American Church Institute, \$1,000; from private subscriptions, \$3,716.

**MISSISSIPPI:****Piney Woods Country Life School, Braxton.**

Principal, Laurence C. Jones.

Independent. Value of property, \$50,055. Number of teachers: men, 5; women, 13. Attendance, 247. Number above elementary grades, 40. Amount paid for salaries of teachers, \$13,112. The school received from the Slater Fund, \$450; from public funds, \$612.50; from other sources, \$12,050.

**The Utica Normal and Industrial Institute, Utica.**

Principal, William H. Holtzclaw.

Independent. Value of property, \$113,996. Number of teachers: men, 12; women, 10. Attendance: male, 120; female, 301; total, 421, of whom 194 (male, 60; female, 134) boarded in the school. Number above elementary grades, 97. Amount paid for administration and salaries, \$16,357. The school received from endowment fund, \$757; from public funds, \$679; from Slater Fund, \$450; from private subscriptions, \$25,829.

Extract from report of Principal:

"One encouraging feature of our work is an increasing number of Southern white people, who not only have subscribed to the work, but assure us that we can depend on them for annual assistance. Our largest gift from a Southern man is \$600."

**NORTH CAROLINA:****Henderson Normal Institute, Henderson.**

Principal, J. A. Cotton.

United Presbyterian. Value of property, \$48,000. Number of teachers: men, 5; women, 11. Attendance, 389. Number above elementary grades, 61. Amount paid for administration and salary of teachers, \$7,550. The school received from the Slater Fund, \$450; from other sources, \$12,425.

Extract from report of Principal:

"Recently we lost one of the buildings by fire. The building with equipment was worth about \$15,000."

**Mary Potter Memorial School, Oxford.**

Principal, G. C. Shaw.

Presbyterian. Value of property, \$59,600. Number of teachers: men, 4; women, 10. Attendance: male, 166; female, 271; total, 437, of whom 193 (male, 65; female, 128) boarded in the school. Number above elementary grades, 130. Amount spent for administration and salary of teachers, \$4,414. The school received from the Slater Fund, \$300; from the Presbyterian Board, \$5,575; from other sources, \$8,484.

**Palmer Memorial Institute, Sedalia.**

Principal, Mrs. Charlotte Hawkins Brown.

Independent. Value of property, \$46,475. Number of teachers: men, 1; women, 8. Attendance: male, 73; female, 88; total, 161, of whom 62 (male, 21; female, 41) boarded in the school. Number above elementary grades, 10. Amount paid for administration and salaries of teachers, \$6,300. The school received from the Slater Fund, \$300; from public funds, \$500; from other sources, \$53,933.

Extract from report of Principal:

"Signs of growing coöperation on the part of local white friends is most encouraging."

**St. Augustine's School, Raleigh.**

Principal, Edgar H. Goold.

Episcopal. Value of property, \$154,229. Number of teachers: men, 9; women, 21. Attendance: male, 122; female, 293; total, 415, of whom 262 (male, 75; female, 187) boarded in the school. Number above elementary, 91.

Amount paid for administration and salaries, \$13,500. The school received from endowment funds, \$2,112; from the Slater Fund, \$600; from the American Church Institute for Negroes, \$3,500; from the Domestic and Foreign Missionary Society of the Protestant Episcopal Church, \$13,083; from private subscriptions, \$6,908.

Extract from report of Principal:

"In connection with St. Augustine's School is St. Agnes Hospital, with a Training School for nurses. During the past year thirty-nine young women have been in attendance. Ten have graduated from the course of three years.

"The financial accounts of the hospital are separate from those of the school. The cost of maintenance for the past year has been about \$21,000; property valued at \$50,000, endowment, \$18,000."

**Waters Normal Institute, Winton.**

Principal, C. S. Brown.

Baptist. Value of property, \$28,500. Number of teachers: men, 3; women, 7. Attendance, 250. Number above elementary grades, 62. Amount paid for administration and salary of teachers, \$3,786. The school received from the Slater Fund, \$450; from public funds, \$750; from other sources, \$2,815.

Extract from report of Principal:

"The school is sorely in need of additional equipment, school-room furnishings, means of increasing the efficiency of our industrial features, workshop equipment, sewing machines, and laundry furnishings."

**SOUTH CAROLINA:**

**Bettis Academy, Trenton.**

President, A. W. Nicholson.

Baptist. Value of property, \$53,000. Number of teachers: men, 5; women, 8. Attendance: male, 130; female, 260; total, 390, of whom 163 (male, 48; female, 115) boarded in the school. Number above elementary grades, 60. Amount



paid for salaries, \$2,447. The school received from public funds, \$525; from the Slater Fund, \$600; from the Mt. Canaan Educational Association (Baptist), \$3,173; from the Mt. Canaan Educational Union, \$649; Convention, \$225; and General Education Board, \$1,000; from public funds, \$525; from private subscriptions, \$450.

Extract from report of President:

"Owing to the outbreak of influenza the boarding department was small this year. We would not accept the children in our departments. Owing to the high cost of labor we were forced to close our harness, shoe shop, and cabinet departments. We hope to be able to open up these departments another term.

"We were able to purchase 107 acres of land, and also to install a Delco lighting plant."

**Brewer Normal and Industrial Institute, Greenwood.**

Principal, Harry A. Beadle.

Congregational. Value of property, \$37,000. Number of teachers: men, 3; women, 8. Attendance: male, 55; female, 134; total, 189, of whom 61 (male, 12; female, 49) boarded in the school. Number above elementary grade, 112. Amount paid for administration and salaries of teachers, \$2,549. The school received from endowment funds, \$1,207; from the Slater Fund, \$300; from the American Missionary Association, \$2,464; from private subscription, \$217; from all other sources, \$4,172.

Extract from report of Principal:

"The aim of this school is definitely, and in all its work, to inspire and train Christian leaders, boys and girls so possessed of faith, character and ability that instinctively and inevitably they shall up-lift and direct the life of homes and communities into which they go. With the passing of the year this aim seemed to fix itself more and more firmly upon the students.

"Another year we hope to increase the number of departments, to include nurses' training, with possibly a hospital for the colored people of all this region, located on the campus, and administered by the A. M. A. through this school."

**Laing Normal and Industrial School, Mt. Pleasant.**

Principal, Miss M. Antoinette O'Neill.

Friends. Value of property, \$16,125. Number of teachers: men, 1; women, 8. Attendance, 310, all in elementary grades. Amount paid for administration and salaries, \$2,364. The school received from endowment fund, \$1,219; from public funds, \$1,080; from Slater Fund, \$300; from private subscriptions, \$1,990.

Extract from report of Principal:

"During the past year the Domestic Science Department has been started in a small way, and during the year a large room was fitted up gradually, so that the next year can be started with new and up-to-date equipment. Much, however, in the way of baking and canning has been accomplished the past year.

"Community work has been started successfully, arousing interest in the neighborhood among older people not heretofore having personal knowledge of the work of the school. Community classes have been attended by those feeling need of help in arithmetic, sewing, knitting, etc."

**Penn Normal Industrial and Agr'l School, St. Helena Island.**

Principal, Miss Rossa B. Cooley.

Independent. Value of property, \$77,092. Number of teachers: men, 9; women, 15. Attendance: male, 108; female, 137; total, 245, of whom 24 (male, 9; female, 15) boarded in the school. Number above elementary grades, 11. Amount paid for administration and salaries, \$16,294. The school received from endowment funds, \$1,581; from the Slater Fund, \$600; from other sources, \$27,447.

Extract from report of Principal:

"During the session an extension campaign was carried on. Three speakers from the school and the quartette carried to distant points a message to fit the present emergency. The points emphasized were more food crops, better live stock, improvements in the rural schools, and how to fight the cotton boll weevil.



"A series of posters was printed, and not only used at the churches and posted at the stores, but they were also given to rural teachers and were used effectively as a basis for lessons in agriculture, reading, spelling, and writing.

"The results were encouraging. There has been a better coöperation between parents and teachers. More than \$300 was raised toward extension of school terms. Cotton acreage was reduced and there is an increase in food acreage."

### **TEXAS:**

#### **Farmers' Improvement Society Agr'l School, Wolfe City.**

President, R. L. Smith.

Independent. Value of property, \$20,157. Number of teachers: men, 2; women, 6. Attendance, 110. Number above elementary grades, 23. Amount paid for salaries, \$2,300. The school received from the Slater Fund, \$450; from other sources, \$3,326.

#### **Extract from report of President:**

"The school has been frequently visited the past year by the business men and citizens of Ladonia and Wolfe City. They not only complimented the work, but helped us much financially.

"We have raised a sufficient amount of wheat, corn, and oats for the needs of the school. Over 1,400 cans and jars of fruit and vegetables have been put up. Much fine stock has been raised, especially hogs. We now have on a campaign for a dormitory for boys to cost \$10,000. We want to add a manual training department to our industries."

### **VIRGINIA:**

#### **Christiansburg Industrial Institute, Cambria.**

Principal, E. A. Long.

Friends. Value of property, \$86,777. Number of teachers: men, 5; women, 10. Attendance: male, 87; female, 142; total, 229, of whom 88 (male, 25; female, 63) boarded in the school. Number above elementary grades, 100. Amount paid for salaries, \$7,962. The school received from endowment funds, \$3,713; from public funds, \$844; from the Slater

Fund, \$600; from the Emlen Institution, \$300; from the New England Friends' Yearly Meeting, \$900; from other sources, \$16,480.

Extract from report of Treasurer :

"After the fire reported about a year ago, repairs were made to the hospital, and the building is now in use under the management of a local white board, which undertakes to raise the necessary funds for its upkeep. Local physicians send colored patients to the hospital, who pay what they can.

"The carpentry department of the school, with the help of one outside workman, built a very attractive cottage for teachers.

"The U. S. Government stopped the colored farm demonstrator in our neighborhood, but the school has tried the experiment of continuing the work. The farm continues to make improvement in its showing."

**Manassas Industrial School, Manassas.**

Principal, Fred. D. Morton.

Independent. Value of property, \$83,980. Number of teachers: men, 7; women, 9. Attendance: male, 56; female, 69; total, 125, of whom 106 (male, 50; female, 56) boarded in the school. Number above elementary grades, 21. Amount paid for administration and salaries of teachers, \$7,245. The school received from endowment funds, \$934; from the Miner Fund, \$800; from the Slater Fund, \$600; from other sources, \$25,055.

The Principal for the session 1919-20 is E. D. Howe.

**St. Paul Normal and Industrial School, Lawrenceville.**

Principal, James S. Russell.

Episcopal. Value of property, \$218,172. Number of teachers: men, 18; women, 18. Attendance: male, 181; female, 257; total, 438, of whom 268 (male, 109; female, 159) board in the school. Number above elementary grades, 124. Amount paid for administration and salaries of teachers, \$35,264. The school received from the Slater Fund, \$600; from public funds, \$617; from the American Church Institute for Negroes and the Episcopal Board of Missions, \$21,250; from other sources, \$27,400.

**COLLEGES AND UNIVERSITIES**

The nineteen institutions aided by the Slater Fund under this class reported 962 college students, 253 of whom were in Fisk University. All of these institutions were aided by some church connection except Atlanta University.

**ALABAMA:**

**Talladega College, Talladega.**

President, Frederick A. Sumner.

Connected with the American Missionary Association (Congregational).

Amount of productive endowment.....	\$ 243,868
Acres owned, 815; value.....	47,000
Value of buildings .....	204,123
Value of equipment .....	47,465
	<hr/>
Total .....	\$ 542,459

Debt, not any reported.

Extract from report of Treasurer:

“Work in improving the campus has started. The walks are being concreted. A new home for a professor is being erected.

“Courses in business administration are to be introduced the coming year. The amount of \$2,500 is being spent for laboratory equipment. The courses in the Slater shop are being increased with the idea of developing teachers of industrial work.”

**Miles Memorial College, Birmingham.**

President, G. A. Payne.

Connected with the Colored Methodist Episcopal Church.

Amount of productive endowment.....	
Acres owned, 30; value.....	\$ 30,000
Value of buildings .....	40,150
Value of equipment .....	4,200
	<hr/>
Total .....	\$ 74,350

Debt, \$4,000.

**Selma University, Selma.**

President, R. T. Pollard.

Connected with the Negro Baptist State Association of Alabama.

Amount of productive endowment.....	
Acres owned, 30; value .....	\$ 25,000
Value of buildings .....	75,000
Value of equipment .....	4,000
	<hr/>
Total .....	\$ 104,000

Debt, \$3,231.

Extract from report of President:

"The manual training for boys at Selma University is becoming one of the most important features of the institution. The second year of it, just closed, shows very great improvement over the previous year in the interest taken by the boys. It has an efficient teacher who is thoroughly interested in the boys."

**GEORGIA:****Atlanta University, Atlanta.**

President, Edward T. Ware.

Amount of productive endowment.....	\$ 150,604
Acres owned, 60; value.....	102,632
Value of buildings .....	160,450
Value of equipment .....	23,758
	<hr/>
Total .....	\$ 437,444

Debt, \$59,482.

Extract from report of President:

"During the summer and fall of 1918 Atlanta University gave instruction in Mechanic Arts to about 250 soldiers in two detachments.

Plans were made at the request of the War Department for training 1,000 soldiers in four detachments during the school year 1918-19. At the opening of the school in the fall a college section of the Students' Army Training Corps was organized and fifty-three students were enrolled. The prospect of peace, and demobilization, brought to an end all plans for the training of soldiers.

"The trustees have decided to place increased emphasis upon the training of teachers as the distinctive work of Atlanta University. In line with this policy a teacher training course has been introduced in the college department, and the enrollment in the high school will be reduced next fall. The Atlanta Board of Education (city) has voted to establish a junior high school for the Negroes, beginning January 1, 1920. As this public school develops, Atlanta University proposes to relinquish her high school work for Atlanta children in favor of the public school, and concentrate upon normal school and college work."

**Morehouse College, Atlanta.**

President, John Hope.

Connected with the Baptist Home Mission Society.

Amount of productive endowment.....	
Acres owned, 13; value.....	\$ 34,800
Value of buildings .....	132,500
Value of equipment .....	7,514
	<hr/>
Total .....	\$ 174,814

Debt, \$1,429.

**Spelman Seminary, Atlanta.**

President, Miss Lucy Hale Tapley.

Connected with the American Baptist Home Mission Society.

Amount of productive endowment.....	\$ 44,342
Acres owned, 20; value .....	42,145
Value of buildings .....	421,714
Value of equipment .....	67,192
	<hr/>
Total .....	\$ 575,393

Debt, none.

**Paine College, Augusta.**

President, Albert D. Betts.

Connected with the Methodist Episcopal Church, South.

Amount of productive endowment.....	\$ 23,416
Acres owned, 109 $\frac{1}{4}$ ; value .....	78,250
Value of buildings.....	132,000
Value of equipment .....	10,000
	<hr/>
Total .....	\$ 243,666

Debt, \$59,902.

Extract from report of President:

"We bought, last January, 91 acres of land adjacent to our present campus, and of this about 70 acres is suitable for farming. We have now ten head of cattle and four hogs. We expect to start a poultry yard next session.

"We have secured a graduate of Hampton Institute as instructor in manual training. He has had four years' experience in Missouri as teacher in this line.

"We are making special effort to get our teacher-training work in the best shape."

**KENTUCKY:****State University, Louisville.**

President, C. H. Parrish.

Connected with the American Baptist Home Mission Society.

Amount of productive endowment.....	
Acres owned, 4; value .....	\$ 20,000
Value of buildings .....	38,500
Value of equipment .....	5,500
	<hr/>
Total .....	\$64,000

Debt, \$4,700.

Extract from report of President:

“We are working on a drive for \$40,000 for boys’ dormitory, Dr. J. S. Anderson having offered us \$3 to every \$1 raised.”

**LOUISIANA:**

**Straight College, New Orleans.**

President, Howard A. M. Briggs.

Connected with the American Missionary Association (Congregational).

Amount of productive endowment.....	\$ 19,012
Acres owned, 2; value .....	20,400
Value of buildings .....	78,600
Value of equipment .....	25,000
	<hr/>
Total .....	\$ 143,012

Debt, not any reported.

**MISSISSIPPI:**

**Tougaloo College, Tougaloo.**

President, William T. Holmes.

Connected with the American Missionary Association.

Amount of productive endowment.....	\$ 7,000
Acres owned, 500; value .....	20,000
Value of buildings .....	95,700
Value of equipment .....	32,800
	<hr/>
Total .....	\$ 155,500

Debt, none.

**NORTH CAROLINA:**

**Livingstone College, Salisbury.**

President, D. C. Suggs.

Connected with the African Methodist Episcopal Zion Church.



Amount of productive endowment .....	\$ 5,000
Acres owned, 316; value .....	58,000
Value of buildings .....	145,000
Value of equipment .....	15,000
	<hr/>
Total .....	\$ 223,000

Debt, about \$15,000.

Extract from report of President :

"A teacher-training course has been arranged, and approved by the State Board of Education, to give all students graduating from the high school course two years' training in the work of teaching, with a view to preparing them for professional work, especially in helping the rural schools. A well-prepared critic teacher is in charge of this work."

**Shaw University, Raleigh.**

President, Charles F. Meserve.

Connected with the American Baptist Home Mission Society.

Amount of productive endowment .....	\$ 54,123
Acres owned, 15; value .....	132,550
Value of buildings .....	192,190
Value of equipment .....	43,350
	<hr/>
Total .....	\$ 422,213

Debt, none.

Extract from report of President :

"On account of the unusual combination of circumstances this has been the most strenuous year that I have known. Just after the opening of school the epidemic of influenza appeared, and for three weeks the institution was strictly quarantined. Soon after the quarantine was removed we formed a unit of the Students' Army Training Corps. This organization was hardly completed and in good working order when the armistice was signed. These facts, coupled with the high cost of living, made it very difficult to bring about the usual results. Notwithstanding these drawbacks, the work in the industrial departments has been highly satisfactory. The exhibit on Commencement Day, take it all in all, was the best that we have ever had."



The President for the session 1919-20 is Joseph L. Peacock.

**SOUTH CAROLINA:**

**Clafin University, Orangeburg.**

President, Lewis M. Dunton.

Connected with the Freedmen's Aid Society (Methodist Episcopal).

Amount of productive endowment .....	\$ 80,000
Acres owned, 50; value .....	50,000
Value of buildings .....	225,000
Value of equipment .....	25,000
	<hr/>
Total .....	\$ 380,000

Debt, none.

Extract from report of President:

"Owing to the high price of labor, the high cost of material, and the confusion and uncertainties of the war we have been obliged to let up considerably in our industrial department. Little was accomplished during the fall term on account of influenza. However, the institution has run an extra month to make up for lost time. We plan to reopen our industrial department next school year."

**TENNESSEE:**

**Lane College, Jackson.**

President, J. F. Lane.

Connected with the Colored Methodist Episcopal Church.

Amount of productive endowment .....	\$ 1,250
Acres owned, 12; value .....	12,000
Value of buildings .....	77,500
Value of equipment .....	10,500
	<hr/>
Total .....	\$ 101,250

Debt, none.

## Extract from report of President :

“Despite the war and war conditions, we have had a good year at this college. The enrollment was good and the spirit of the work was never better. Mutual good-will, full confidence, respect, and fellowship characterized the relations of students and teachers. Each year the students make some contribution to the institution, in the way of some permanent improvement. One year they fitted an assembly hall with patented desks; another year they put in the college hall sanitary drinking fountains; another year they laid concrete walks about the college grounds, and the past year they purchased a grand concert piano for the college chapel.

“Laboratory and shop work is stressed more than ever before. This seems to be one of the results of the war. Courses in biology, chemistry, physics, mechanical and architectural drawing, as well as the industrial courses, have all been strengthened and made more effective.”

**Knoxville College, Knoxville.**

President, James Kelly Giffen.

Connected with the United Presbyterian Church.

Amount of productive endowment .....	\$ 12,300
Acres owned, 105; value .....	54,669
Value of buildings .....	94,500
Value of equipment .....	19,912
	<hr/>
Total .....	\$ 181,381

Debt, \$4,150.

The Slater appropriation to Knoxville College was used in the excellent nurse-training department.

**Fisk University, Nashville.**

President, Fayette Avery McKenzie.

Independent, but affiliated with the American Missionary Association (Congregational).

Amount of productive endowment .....	\$ 253,290
Acres owned, 39; value .....	76,451
Value of buildings .....	399,681
Value of equipment .....	86,602
	<hr/>
Total .....	\$ 816,024

Debt, \$70,000.

**TEXAS:**

**Bishop College, Marshall.**

President, C. H. Maxson.

Connected with the American Baptist Home Mission Society.

Amount of productive endowment .....	\$ 12,000
Acres owned, 23; value .....	100,000
Value of buildings .....	125,000
Value of equipment .....	6,000
	<hr/>
Total .....	\$ 243,000

Debt, \$6,548.

Extract from report of President:

“Bishop College, in common with other institutions, responded to the request of the Government and provided for and maintained an S. A. T. C. unit of 90 members. The experiment was not satisfactory from the standpoint of scholarship and school discipline.

“Bishop suffered two disastrous fires: the first in Marston Hall, the young men’s dormitory, which did damage to the amount of over \$7,000. We received from the insurance companies \$4,188. Morehouse Hall, the administration building, containing class-rooms, library, chapel, and chemical and physical laboratories, was burned December 15, 1918. The fire was the work of incendiary—two or three young boys, who could give no adequate motive for their deed, deliberately set fire to the building. The building and contents were a total loss. Temporary class-rooms were immediately provided, and the work of the school went on without interruption, and, although handicapped, a successful year’s work was accomplished.”

**Wiley University, Marshall.**

President, M. W. Dogan.

Connected with the Freedmen’s Aid Society (Methodist Episcopal).

Amount of productive endowment.....	
Acres owned, 53; value .....	\$ 10,000
Value of buildings .....	200,000
Value of equipment .....	15,000
	<hr/>
Total .....	\$ 225,000

Debt, none.

Extract from report of President:

"Our work was greatly hindered last session on account of the burning of three dormitories, caused by defective wiring. The students held together remarkably well under the circumstances, and all final examinations were had. Two nice fire-proof buildings are now in course of erection, and others will be erected later on."

Debt, none.

**Texas College, Tyler.**

President, W. R. Banks.

Connected with the Colored Methodist Episcopal Church.

Amount of productive endowment.....	
Acres owned, 101; value .....	\$ 30,000
Value of buildings .....	47,800
Value of equipment .....	9,074
	<hr/>
Total .....	\$ 86,874

Debt, \$4,000.

Extract from report of President:

"An increasing number of applications come to me annually from rural sections all over Texas for good teachers.

"From year to year I have noted that our farmers buy hay, meat, corn, etc., on credit, the very things which by following modern methods they could easily have produced in ample quantities at home.

"The records show that 75 per cent of our students are from rural districts. Therefore, I am convinced that the prime efforts of Texas College should be an increasing emphasis on teacher and agricultural training."

NAME	Teachers				Pupils						
	Total	Men	Women	Total attendance	Male	Female	College	Secondary	Elementary	Other Classes	Boarding in Institution
Miles Memorial College.....	11	5	6	567	171	396	2	172	397	(62)	120
Selma University .....	24	6	18	482	157	325	2	140	340	0	214
Talladega College .....	42	14	28	629	305	324	74	274	213	68	221
Atlanta University .....	32	13	19	667	211	456	68	546	(219)	53	191
Morehouse College .....	22	14	8	416	416	0	56	169	151	40	215
Paine College .....	19	9	10	303	138	165	17	77	172	37	160
Spelman Seminary .....	52	0	52	824	0	824	6	242	480	96	435
State University .....	15	8	7	181	83	98	3	59	56	63	88
Straight College .....	25	9	16	506	194	312	16	279	177	34	113
Tougaloo College .....	28	8	20	390	140	250	6	213	171	.....	179
Livingstone College .....	30	14	16	575	263	312	57	148	276	94	325
Shaw University .....	23	9	14	410	220	190	49	320	(56)	41	245
Clafin University .....	21	8	13	643	264	379	19	133	470	21	350
Fisk University .....	33	12	21	578	257	321	256	222	64	36	326
Knoxville College .....	20	6	14	402	137	265	50	137	167	48	402
Lane College .....	18	8	10	319	111	208	17	135	146	21	170
Bishop College .....	24	8	16	541	267	274	139	265	137	.....	365
Texas College .....	16	8	8	335	103	232	6	149	168	12	274
Wiley University .....	24	11	13	585	280	305	135	236	142	72	363

NAME	Receipts						
	Tuition and fees	Endowment	Church connection	Private subscriptions	Slater Fund	Other funds	Total receipts
Miles Memorial College .....	\$ 4,874	.....	\$ 4,240	.....	\$ 400	.....	\$ 9,514
Selma University .....	2,520	.....	1,950	\$10,480	450	\$ 8,270	23,670
Talladega College .....	8,225	\$10,088	21,853	8,630	750	13,609	53,068
Atlanta University .....	13,123	8,439	.....	23,915	2,000	14,303	61,780
Morehouse College .....	2,622	.....	10,578	.....	900	29,178	43,278
Paine College .....	13,357	735	20,207	9,315	400	4,759	48,773
Spelman Seminary .....	12,736	1,693	9,500	3,673	1,500	30,482	59,584
State University .....	6,974	.....	1,818	7,625	600	1,303	18,320
Straight College .....	7,352	144	23,044	1,534	750	.....	32,824
Tougaloo College .....	2,792	340	22,583	6,006	750	5,707	38,178
Livingstone College .....	2,000	12,000	1,200	.....	600	14,780	30,580
Shaw University .....	22,189	.....	14,700	1,269	2,000	24,092	64,250
Clafin University .....	12,675	3,900	26,408	.....	1,500	5,550	50,033
Fisk University .....	15,961	13,375	5,041	28,512	2,000	26,160	98,170
Knoxville College .....	5,393	.....	22,303	7,989	450	1,097	37,232
Lane College .....	2,750	50	7,000	1,850	400	50	12,100
Bishop College .....	10,022	.....	23,110	489	750	4,236	38,607
Texas College .....	588	.....	7,609	.....	400	2,850	11,447
Wiley University .....	6,594	.....	6,278	.....	600	14,990	28,463

NAME	Expenses			
	Administration and salaries of teachers	Other current expenses	Amount added to endowment	Amount spent in permanent improvements
Miles Memorial College.....	\$ 3,155	\$ 4,507	.....	.....
Selma University .....	14,836	8,906	.....	.....
Talladega College .....	32,398	16,176	\$ 1,000	\$ 4,494
Atlanta University .....	34,305	31,152	4,065	1,483
Morehouse College .....	17,340	23,980	1,150	1,669
Paine College .....	33,354	39,326	.....	29,265
Spelman Seminary .....	28,424	26,620	5,000	1,773
State University .....	7,324	8,979	.....	.....
Straight College .....	12,801	9,614	.....	15,488
Tougaloo College .....	19,139	15,390	.....	2,125
Livingstone College .....	21,000	4,026	.....	1,300
Shaw University .....	15,028	48,346	.....	1,172
Claffin University .....	15,782	33,071	3,900	3,100
Fisk University .....	42,934	45,875	2,261	.....
Knoxville College .....	19,297	11,195	9,500	.....
Lane College .....	9,775	2,058	.....	275
Bishop College .....	19,323	14,492	.....	10,586
Texas College .....	5,693	8,805	.....	2,652
Wiley University .....	9,240	11,639	.....	3,600

## B Y - L A W S

---

1. The officers of the Board shall be a President and a Vice-President, chosen from the members, and a Treasurer, Secretary, and Director, who may or may not be members of the Board. These officers shall be elected by ballot at each annual meeting and shall hold office, unless removed, until their successors have been chosen, and vacancies, when they occur, shall be filled by ballot.

2. The annual meeting of the Board shall be held on the fourth Wednesday in April, at such time and place as shall be designated by the Board or the President. Special meetings may be called by the President or the Executive Committee at such times and places as in their judgment may be necessary, and shall be called on the written requisition of three members.

3. A majority of the members of the Board shall be a quorum for the transaction of business.

4. The President shall preside at all meetings of the Board; shall appoint all standing or special committees; shall call all meetings of the Board, as hereinbefore provided, and shall perform such other duties as are incumbent upon him.

5. The Vice-President shall, in the absence or disability of the President, have the same powers and perform the same functions as those devolving upon the President. In the absence of both of these officers, the members assembled, at any meeting, may select a Chairman *pro tempore*.

6. The Secretary shall keep a record of all the meetings of the Board and shall publish its proceedings annually for general distribution.

7. The Treasurer shall have custody of all money and assets of the Corporation; shall collect all funds, revenues, etc., due the same; shall deposit, as soon as received, all money, checks, funds, etc., in the name of the Corporation, in a bank or banks designated by the Finance Committee, except that if the Treasurer be a trust company it shall itself care for such funds; shall pay warrants only when countersigned by the Director; shall retain vouchers for all disbursements; shall keep a detailed account of all the receipts, revenues, and expenditures of the Corporation, and furnish annually, or whenever required, a statement of the same; shall hold the books, accounts, vouchers, etc., at all times subject to the inspection of the members of the Board; and shall receive such compensation as may be determined by the Board.



8. There shall be appointed by the President at each annual meeting the following Committees:

- (a) A Finance Committee consisting of three members,
- (b) An Executive Committee consisting of five members,
- (c) An Education Committee consisting of five members.

The President of the Board shall be *ex officio* member of all Committees.

9. The Finance Committee, in connection with the Treasurer, shall have charge of the moneys and securities belonging to the Fund, with authority to invest or reinvest the moneys and dispose of the securities at their discretion, subject, however, at all times, to the instructions of the Board. All securities belonging to the Trust shall stand in the name of "THE TRUSTEES OF THE JOHN F. SLATER FUND" and be transferred by the Treasurer when authorized by a resolution of the Finance Committee.

10. The Executive Committee shall have all the powers of the Board between the meetings of the Trustees, except that no real estate shall be sold and no change of general policy shall be initiated by it. Three members shall constitute a quorum for the transaction of business. The Secretary of the Board shall be *ex officio* Secretary of the Executive Committee.

11. The Education Committee shall be charged with the duty of studying the education of the Negro race in the South, of recommending methods of assistance; and of reporting to the Board at the annual meeting with regard to the special educational work of the Fund, and also in regard to any other educational matters to which their attention may be directed.

12. The Director shall be charged with the duty of carrying out the designs of the Trust under the instructions which may, from time to time, be given by the Board or the Executive Committee.

13. In case of the absence or disability of the Treasurer, the Finance Committee shall have power to fill the vacancy temporarily.

14. Vacancies in the Board shall be filled by ballot, and a vote of a majority of all the members shall be necessary for an election.

15. These By-Laws may be altered or amended at any annual or special meeting, by the vote of the majority of all the members of the Board, provided notice of the amendment has been given five days in advance of said meeting.

OCCASIONAL PAPERS PUBLISHED BY THE TRUSTEES OF  
THE JOHN F. SLATER FUND.

---

1. Documents Relating to the Origin and Work of the Slater Trustees, 1894.
2. A Brief Memoir of the Life of John F. Slater, by Rev. S. H. Howe, D. D., 1894.
3. Education of the Negroes Since 1860, by J. L. M. Curry, LL. D., 1894.
4. Statistics of the Negroes in the United States, by Henry Gannett, of the United States Geological Survey, 1894.
5. Difficulties, Complications, and Limitations Connected with the Education of the Negro, by J. L. M. Curry, LL. D., 1895.
6. Occupations of the Negroes, by Henry Gannett, of the United States Geological Survey, 1895.
7. The Negroes and the Atlanta Exposition, by Alice M. Bacon, of the Hampton Normal and Industrial Institute, Virginia, 1896.
8. Report of the Fifth Tuskegee Negro Conference, by John Quincy Johnson, 1896.
9. A Report Concerning the Colored Women of the South, by Mrs. E. C. Hobson and Mrs. C. E. Hopkins, 1896.
10. A Study in Black and White, by Daniel C. Gilman, 1897.
11. The South and the Negro, by Bishop Charles B. Galloway, of the Methodist Episcopal Church, South, 1904.
12. Report of the Society of the Southern Industrial Classes, Norfolk, Va., 1907.
13. Report on Negro Universities in the South, by W. T. B. Williams, 1913.
14. County Training Schools for Negroes, 1913.
15. Duplication of Schools for Negro Youths, by W. T. B. Williams, 1914.
16. Sketch of Bishop Atticus G. Haywood, by Rev. G. B. Winton, D. D., 1915.
17. Memorial Addresses in Honor of Dr. Booker T. Washington, 1916.
18. Suggested Course for County Training Schools, 1917.
19. Southern Women and Racial Adjustment, by Mrs. L. H. Hammond, 1917.
20. Reference List of Southern Colored Schools, 1918.

